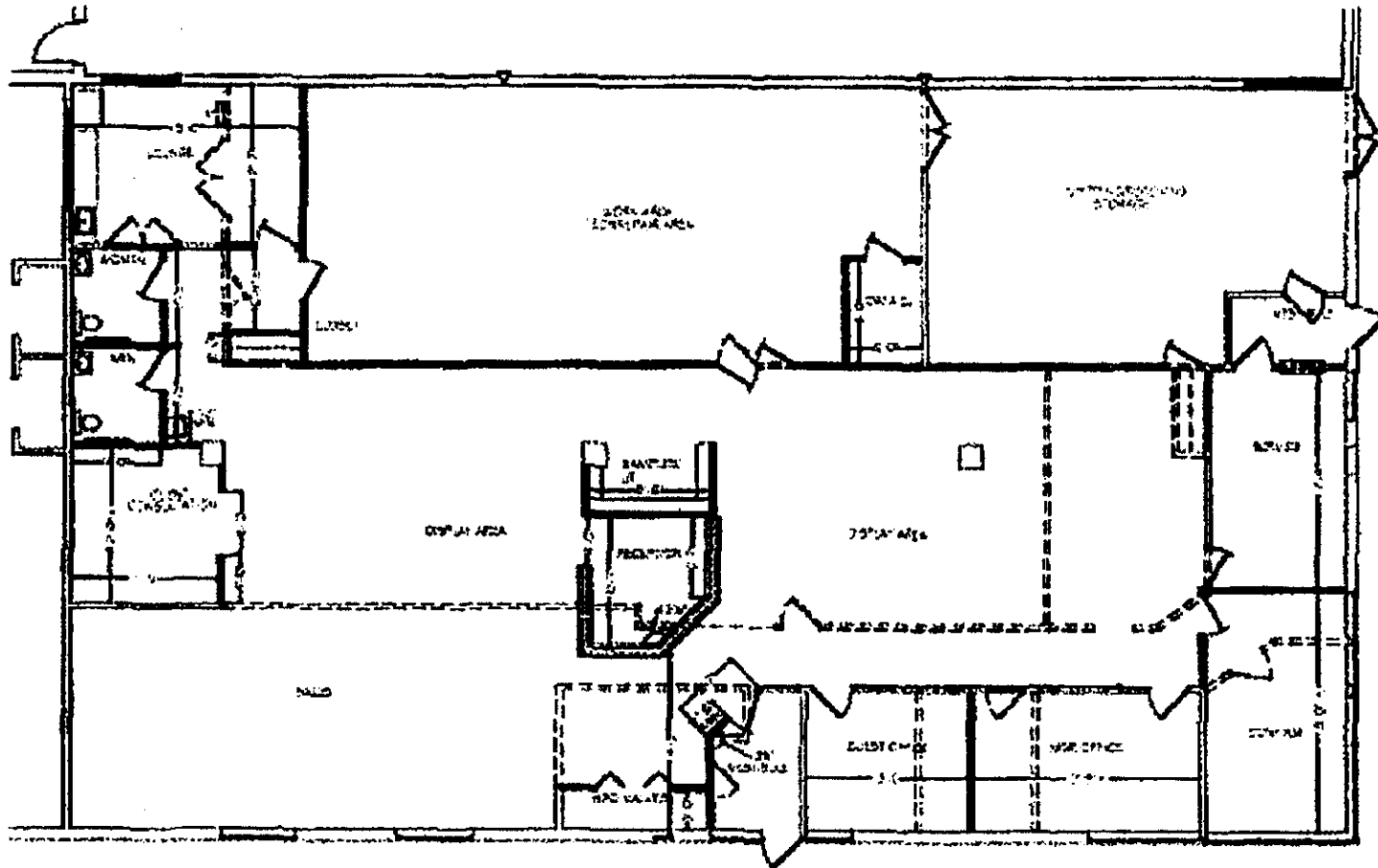
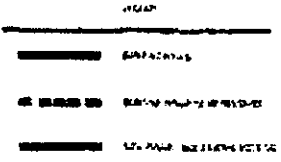


# SCHEDULE A

## (DEMISED PREMISES)



NOTES:  
 1. ALL DIMENSIONS ARE TO FACE UNLESS OTHERWISE NOTED.  
 2. ALL WALLS ARE 1/2" THICK UNLESS OTHERWISE NOTED.  
 3. ALL DOORS ARE 3'0" WIDE UNLESS OTHERWISE NOTED.  
 4. ALL WINDOWS ARE 6'0" WIDE UNLESS OTHERWISE NOTED.  
 5. ALL CEILING HEIGHTS ARE 8'0" UNLESS OTHERWISE NOTED.  
 6. ALL FLOOR FINISHES ARE TO BE DETERMINED BY THE ARCHITECT.  
 7. ALL WALL FINISHES ARE TO BE DETERMINED BY THE ARCHITECT.  
 8. ALL CEILING FINISHES ARE TO BE DETERMINED BY THE ARCHITECT.  
 9. ALL LIGHT FIXTURES ARE TO BE DETERMINED BY THE ARCHITECT.  
 10. ALL MECHANICAL SYSTEMS ARE TO BE DETERMINED BY THE ARCHITECT.



DATE: \_\_\_\_\_  
 DRAWN BY: \_\_\_\_\_  
 CHECKED BY: \_\_\_\_\_  
 SCALE: \_\_\_\_\_

**GETSLOFF**  
**Design Group**

1111 11th Street, Suite 100, San Francisco, CA 94103  
 Phone: (415) 774-1111  
 Fax: (415) 774-1112  
 Email: info@getsloff.com

PELLA

1111 11th Street, Suite 100, San Francisco, CA 94103  
 Phone: (415) 774-1111  
 Fax: (415) 774-1112  
 Email: info@getsloff.com

A-1