

NEW YORK STATE  
DEPARTMENT OF TRANSPORTATION  
CONVEYANCE MAP

SCOTTSVILLE ROAD, PART 2  
STATE HIGHWAY NO. 79

PIN 480584

MAP NO. 2-C  
PARCEL NO. 155  
SHEET 1 OF 3 SHEETS

MAP REFERENCE INFORMATION:

Portion of Map No. 119-D, Parcel No. 142 which map was filed in the Department of Transportation on August 23, 2004 and subsequently conveyed to the Department of Transportation by deed and filed in the Office of the Clerk of Monroe County on October 26, 2004 in Liber 10038 of Deeds at Page 525.

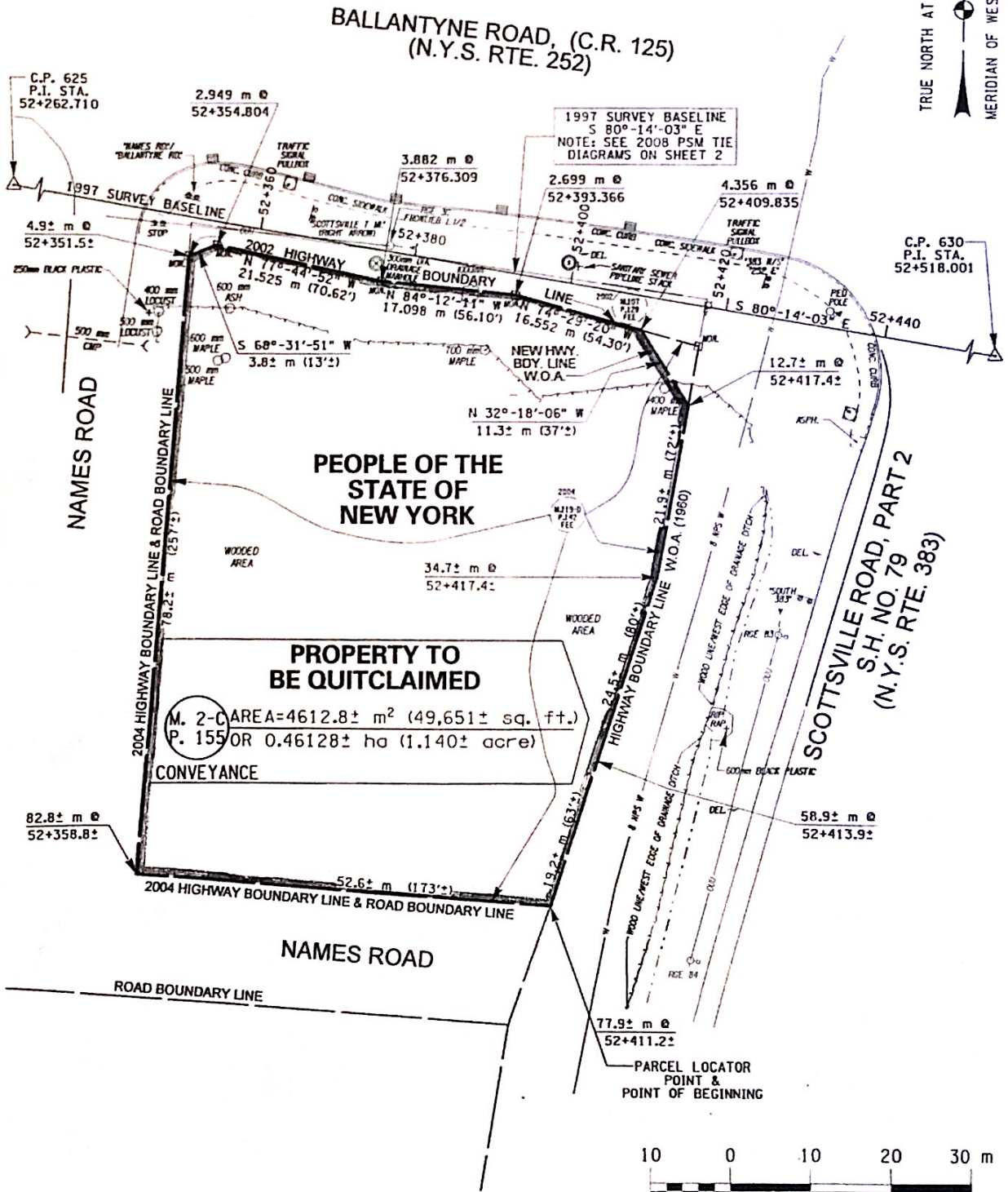
LANDS OF THE PEOPLE OF THE  
STATE OF NEW YORK  
UNDER PRESENT JURISDICTION OF  
THE DEPARTMENT OF TRANSPORTATION

PARCEL SUMMARY:  
Type: CONVEYANCE  
Portion of 2004 Tax  
Map Ref. No. 147.19-1-NO I.D.  
Town of CHILI 87  
County of MONROE  
State of New York

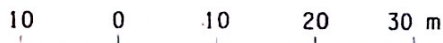
Parcel Locator Point:

Parcel No: 155  
N: 343 846.817  
E: 423 378.876

NOTE: LOCATIONS OF ANY UNDERGROUND UTILITIES AND EASEMENTS FOR SAID UTILITIES SHOWN ON THIS MAP ARE APPROXIMATE.



M. 2-C AREA=4612.8± m<sup>2</sup> (49,651± sq. ft.)  
P. 155 OR 0.46128± ha (1.140± acre)



SCALE 1:500  
ONE METER EQUALS 3.2808333333 FEET.  
ONE SQUARE METER EQUALS 10.7638673611 SQUARE FEET.

FILE NAME = 88875612.Dwg.dwg